

Event Tent

SLA's Event Tents perfectly combine protection from the elements and strong Customer identification all under one roof.

Event Tents are topped with Waterproof WeatherGuard fabric graphics specifically engineered to shield against rain and sun as well as to splash vivid graphics across every visible surface. Add spot logos to a solid top or go "all in" with a completely dye-subbed, custom printed tent.

Perfectly suited for both indoor and outdoor use, Event Tents grab attention anywhere they are used. Great for fairs, festivals, sporting events and just about any place where Customers require a shelter that screams...



[p] 484-343-5176 [f] 610-857-1186
www.SlaServiceManagement.com

Event space definition is crucial!

Start here, go there, stand here, over here... Without clear markers, confusion quickly sets in.

Two super popular solutions with Event Planners that get the job done while simultaneously promoting your sponsors or message!

BASELINE™

Baseline is the traditional A-frame design, with sturdy aluminum frames.



Ridgeline™

Ridgeline has a more rounded canopy shape with an ultra portable collapsible tunnel frame!



Both Feature:

- Brightly colored fabric skins
 - Quick easy set-up
 - Stake down capability
 - Indoor/Outdoor use
- Perfect alone or in groups
- Message visibility from above and 360°

Two Popular Options for festivals, marathons, fund raisers, and more!

Great sponsor visibility on playing fields at any sporting event!



[p] 484-343-5176 [f] 610-857-1186
www.SlaServiceManagement.com

Skins change so easily, you might consider buying your own hardware and re-skinning for your customers' rental needs.

SKYBLADE

Skyblade™

Sky Blade is a lightweight and portable flag stand perfect for outdoor events. The Sky Blade is designed to hold up in outdoor conditions with either the weighted base or ground stake. For higher winds add additional weight. With one or multiple units and three different heights available your message will have exceptional visibility for all to see.



Skyblade Standard Specifications			Wind Speed Guidelines			
Stand Size	Weight w/Xbase	Weight w/ Ground Stake	Xbase	Xbase w/ additional weight	Ground Stake	Xbase + Snow & Soil Stakes
Reg 6' 5"	22lbs.	4.4lbs.	30 mph	40 mph	40 mph	40 mph
Super 9' 8"	23.8lbs.	6.2lbs.	20 mph	30 mph	40 mph	40 mph
Giant 13'	25.6lbs.	8lbs.	N/A	20 mph	30 mph	40 mph



Skyblade Ground Stake

Applications:
Golf outings, Beach branding, Directional signage, College/Universities

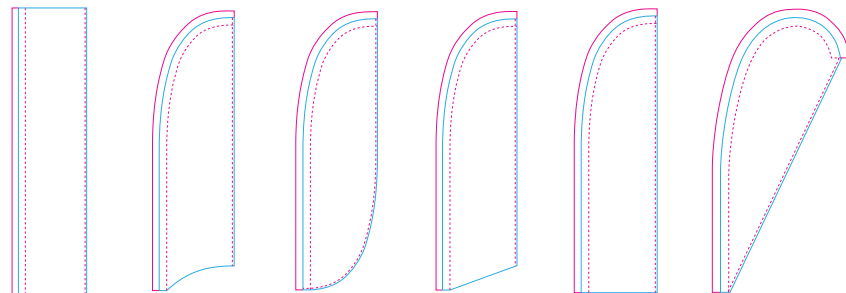
Benefits:
Stable in windy conditions, great for long term outdoor use, exceptional image visibility

Features:
Three heights - Regular, Super and Giant Easy to transport
Designed for both indoor and outdoor use

Banshee™

kinetic banner system

The Banshee kinetic banner system is designed to be used indoors or outdoors in most weather conditions. The six unique shapes are designed to give you a variety of options to display your marketing message at Events, Trade Shows, Promotional Marketing and more. The Banshee uses the Pennant fabric process which is a Kaleidoscope Select process that uses full saturation so your message bleeds through and can be seen on both sides of the display. This system has two mechanisms to handle wind: a bearing polypropylene bushing allowing the graphic to rotate out of the wind; but equally important is that the top baton section bends at the same time as the whole unit swivels out of the wind and therefore handles gusts from any direction very well. Banshee is a simple, durable and effective banner system.



Rectangle Concave Convexa Angled Straight Drop

Pennant fabric process - This process is a one sided fabric with bleed through saturation. It is used with all Banshee systems and also can be used with hanging banner applications. The Pennant's full saturation feature gives your message 360 degree visibility.

BANSHEE

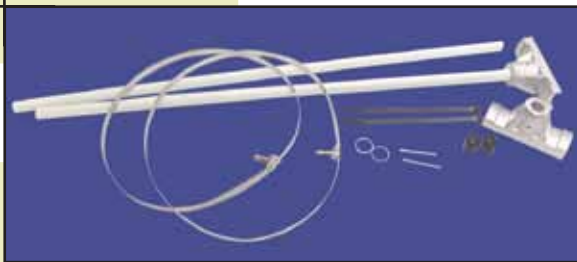
OUTDOOR BANNERS

OUTDOOR BANNERS



Outdoor banners are produced on 12oz. Saturn Banner material with our Print-on-it direct to substrate graphics UV process. The maximum print width is 70” without a seam. Larger images are seamed with sail tape.

- The 12oz. Saturn Banner Material has a six month guarantee not to fade under normal circumstances.
- Universal Boulevard poles and clips are available in 24” and 30” widths for single and double-sided use
- All banners are finished per specification with pole pockets, grommets and seams at no extra charge



Boulevard Poles and Clips - Set of 2

Boulevard Poles are used for single or double-sided banners and signs that are typically installed on light or electric poles.

24 “ Single

30” Single

24” Double

30” Double

36” & 48” sizes available Please call for quote.

